

academics

Students earn full semester credit by taking four courses. All courses offered in Nairobi are approved by the University curriculum committee and meet distribution, major, and degree requirements.

Course offerings have included:

- Anthropology 337: East African Societies
- English 345: Survey of African Literature
- Government 337: Politics and Government of East Africa
- History 337: History of Eastern Africa
- Modern Languages 101: Swahili
- Biology 282: Tropical Ecology
- Interdisciplinary Studies 337: Internship

It is assumed that each student will elect an internship and three other courses. Course offerings are subject to change every semester depending on the interests of selected applicants.

The teaching staff is drawn from the faculties of the University of Nairobi and Kenyatta University, and from international organizations operating in East Africa. All faculty possess advanced academic degrees and hold adjunct faculty status at St. Lawrence University.

For research and study, students use the University of Nairobi library, where reading and reserve book privileges have been extended by the registrar.

internships

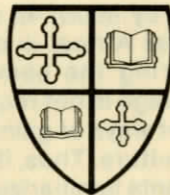
In the internship program each student is placed in a situation related to his or her interests for three full weeks. Opportunities for practical experience are unlimited. Students have worked in the fields of teaching, general medicine, pre- and post-natal care, specialty medicine, veterinary medicine, financial management and planning, marketing research and development, journalism, wildlife study, law, coffee plantation research, animal behavior, ranch management, ecology, geology, archeology, fish farming, rural development, and land use. In each case, an effort is made to have the intern contribute to a project of importance to the sponsor.

Certain internships require students to have substantial academic or practical experience, especially in the sciences and business. Most internships are developed after students have arrived in Nairobi and discussed in depth their interests with the director, or discovered in what area they wish to devote three weeks.

cost and information

The comprehensive fee for the semester during the academic year 1982-83, exclusive of international air travel, is \$4,605, the same as a semester on the St. Lawrence campus. The airfare is approximately \$1,400, subject to international regulations. Students should be aware that all costs are subject to change. Additional information is available by writing to:

Campus Coordinator
Nairobi Semester Program
Department of Government
St. Lawrence University
Canton, New York 13617



St. Lawrence University subscribes fully to all federal and state legislation and regulations (including the 1964 Civil Rights Act, Executive Order 11246, Title IX of the Educational Amendments of 1972, Section 504 of the Rehabilitation Act of 1973, IRS Anti-Bias regulation and Part 53, Section 607 of the N.Y. State Education Law) regarding discrimination on the basis of race, color, sex, religion, age, physical handicap, or national or ethnic origin in its programs and activities. St. Lawrence University is an Affirmative Action/Equal Opportunity employer.

St. Lawrence University

Semester in Kenya



The St. Lawrence University Semester in Kenya

goals

The semester in Kenya provides students with a setting for experiential learning that cannot be duplicated in the university classroom. Through the opportunities offered by the program, students can expand their minds, develop self-awareness, and open themselves to adventure while examining social change, environmental problems, African cultures, political development, and geographic diversity. The program seeks to foster in each student individual growth and respect for others.

setting

Kenya has a varied geography. The low-lying western plains gently rise to form the slopes of Mt. Elgon; the southern plains slope to the imposing Mt. Kilimanjaro; and the center of Kenya features the magnificent triple-peaked volcanic plug of Mt. Kenya. The population of 15 million clusters around these mountains and along Kenya's scenic coastline. The cosmopolitan capital city, Nairobi, looms out of the fertile savanna of central Kenya. According to the 1971 census, 89% of Kenya's population lives in rural areas.



Many cultures are found in Kenya, but the republic has been stable and is becoming more unified as modern technology and westernization appear. Kenyans are enthusiastic and friendly toward Americans, and in the cities many people speak English as well as the native Swahili.

format of the field semester

Students travel to Nairobi at approximately the beginning of the regular on-campus semester—early September for fall semester or late January for spring semester. During each term, students remain in Kenya for about three and one-half months.

Five components to the Nairobi semester have been developed to provide an integrated educational program. Students participate in a brief homestay with a rural African family, a more extended stay with an urban African family, an internship with a public or private agency, a full academic course of study, and planned field trips. The two homestays and the internship insure three continuing points of contact with African society. The academic course work provides a framework in which to organize the many impressions gained from living in a new environment. Travel complements the concentration of living and working in Nairobi.

rural homestay

Immediately following a four- to five-day intensive orientation in Nairobi, students live with rural African families for three days. This serves as a means of immersing students in African culture by rapidly expanding their perceptions of their new surroundings.

urban homestay

For three full weeks each student lives with a Kenyan host family in Nairobi. Under the program arrangements, at one time half the students are in residence at the studies center while the other half are on the homestays. The urban homestay is one of the key elements of the Nairobi semester, providing students with the best opportunity for interaction with African families on an extended and intimate basis.

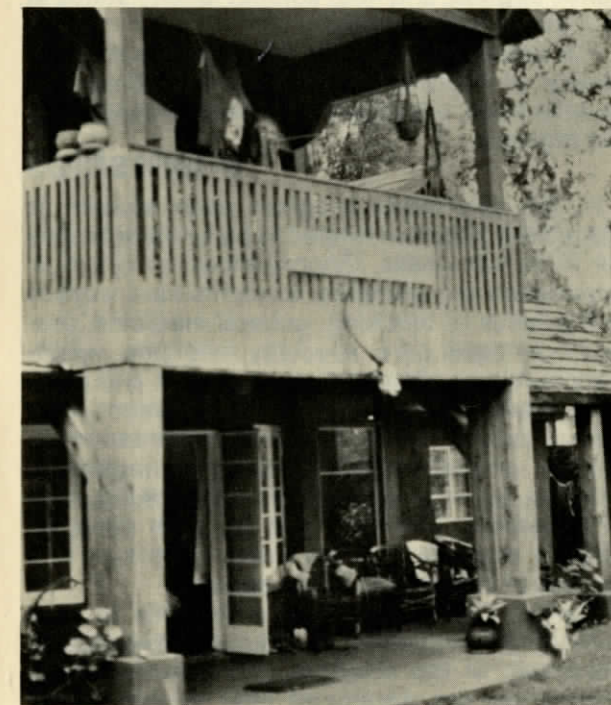


language

Swahili, spoken by about 45 million people in eastern and central Africa, is offered as a full-credit course during the semester. Although knowing the language is not required, it is one of the most important ways of gaining access to the people and their culture. Thus, it is highly recommended that students familiarize themselves with the national language.

living accommodations

The St. Lawrence University studies center is located on five and one-half acres in the Nairobi suburb of Karen, just 12 miles from the city center. The living arrangement provides an ideal setting from which to base the Kenya semester program. The studies center is conveniently accessible to city buslines; in addition, transportation to and from the city is provided by program vehicles. Students reside in a large house together; the assistant director and the director and his family live on the same property and are easily accessible to students. Laundry facilities, linens and blankets, and morning and evening meals are provided. Weekly lunch allowance is provided for each student.



The St. Lawrence University studies center in the Nairobi suburb of Karen, home base for students and directors of the program.

travel

During the semester, the group takes two planned field trips. The first is a three-day safari to one of the national parks; the second is to northern Kenya among people whose life and customs are dramatically different from those in and around Nairobi. The field trip is also an integral part of the sociology-anthropology course offered.

When not obligated to academic work or to internships, students are permitted to travel independently of the group. Each must travel with at least one companion from the program, and the program staff must be informed of all travel plans. Weekend trips are also organized by the director and/or assistant director to other places of interest, expenses being shared by all who participate. One extended period of travel can be arranged at an additional cost to students. They may travel independently or participate in a group travel experience to an area not normally accessible. Destinations in the past have included Lake Turkana and Mt. Kenya.